

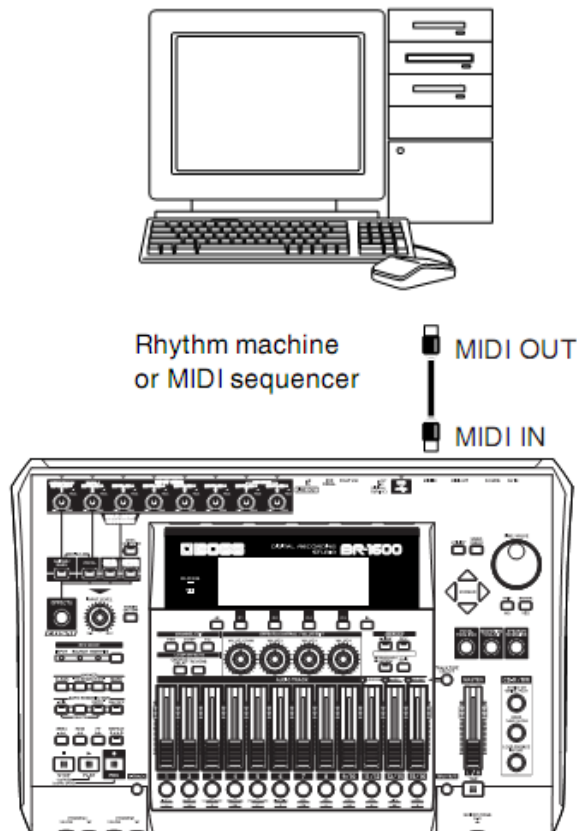
How to Synchronize Your BR-1600CD with SONAR

To complete this tutorial you will require the following:

- BR-1600CD
- SONAR (any edition)
- A computer equipped with a Midi Interface



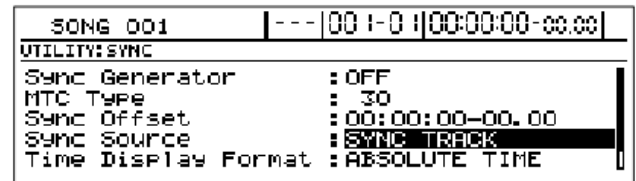
It's possible to "Slave" the BR-1600CD to MTC (Midi Time Code) output by SONAR. This will lock both projects together so the hours, minutes, seconds & milliseconds will run in sync. This is a great feature, but not always preferred. In some cases you might need to synchronize the metronomes of each project. Let's say you have a Midi drum sequence running in Sonar that you would like to record onto your BR-1600CD. You would want both projects to be playing at exactly the same tempo, so the beats playing in your SONAR project match exactly with the metronome on your BR-1600CD. Otherwise when it comes time to record other parts or use the BR-1600CD's tempo based effects, everything will be out of time. The best way to do this is to sync to Midi clock. Unfortunately the BR-1600CD cannot "Slave" to Midi clock, so you can do the following:



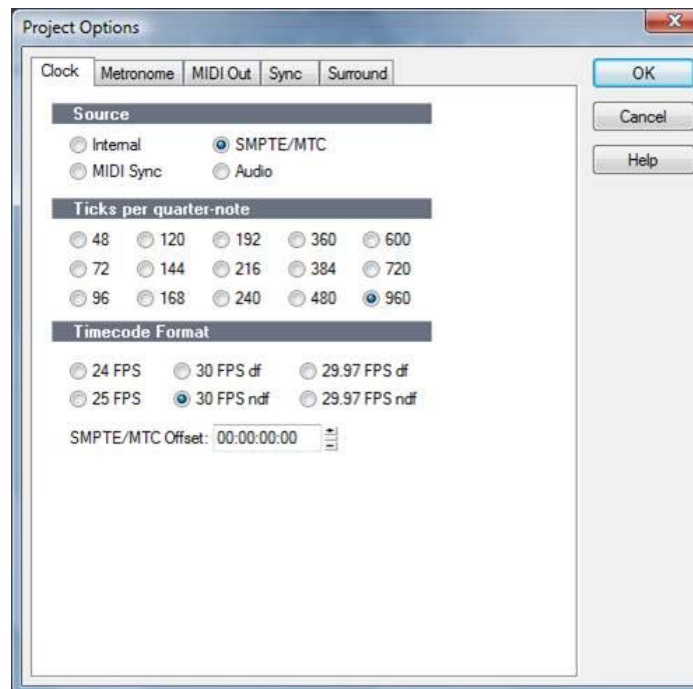
- First step, you need to record a sync track onto your BR-1600CD
- Connect a Midi cable from your computers Midi Out to the BR-1600CD's Midi In
- Open your Sonar project, this project will determine the tempo on the BR-1600CD
- Press Utility on your BR-1600CD & select Sync Track
- "Waiting for Clock" should appear on the screen, play your SONAR project



- You'll notice BR display has changed to "Recording", continue to play the Sonar project for the full length of the song
- Press Stop on the BR & Sonar
- Now you have recorded the clock data from Sonar to your BR, you can set the BR so it will synchronize with it
- Press Utility, set Sync Gen to MTC
- Scroll down to Sync Source & select Sync track, press Exit



- Swap the Midi cables so the BR's Midi out is transmitted to your computers Midi In
- Within SONAR, go to the Options Menu & select Project Options
- Change the Clock Source to SMPTE/MTC, click OK



- You'll find that when you hit play on your BR, both units are perfectly in sync
- Turn on the SONAR Metronome & turn up tracks 9/10 to hear for yourself